

Revision 4, 28 feb 2006

# Salsa

# Manual

 **APCO Aviation**  
*Setting Future Standards*

Factory: 7, Chalamish Street - Industrial Park - Caesarea 38900 ISRAEL [www.apcoaviation.com](http://www.apcoaviation.com)  
Tel: +972 4 6273727 Fax +972 4 6273728



## CONTENTS:

1	DISCLAIMER OF LIABILITY	5
2	CONSTRUCTION	5
3	MATERIALS	5
4	HIT VALVES (High speed In-Take)	6
5	Bat holes (Velcro closure on trailing edge tip)	6
6	TRIMMING	7
7	HARNESS	7
8	SPEED SYSTEM	7
8.1	ASSEMBLY & ADJUSTMENT	7
8.2	OPTION 1	8
8.3	OPTION 2	8
9	EMERGENCY PARACHUTE ATTACHMENT	9
10	RISERS	9
11	INSPECTION	11
11.1	GENERAL	11
11.2	BRAKE SETTING	11
11.3	FIRST CHECK AND PREFLIGHT INSPECTION	11
11.4	REGULAR INSPECTION CHECKS	11
11.5	LINE MAINTENANCE	12
12	TAKE OFF	12
12.1	LAYOUT	12
12.2	ALPINE LAUNCH OR FORWARD LAUNCH	13
12.3	STRONG WIND AND REVERSE LAUNCH	13
12.4	TOW OR WINCH LAUNCHING	13
13	FLIGHT TECHNIQUES	13
13.1	FLYING SPEED	13
13.2	THERMAL FLYING	14
13.3	ASYMMETRIC COLLAPSE	14
13.4	CRAVAT	14
13.5	FRONT STALL OR SYMMETRIC COLLAPSE	14
13.6	B-STALL	15
13.7	BIG EARS	15
13.8	DEEP STALL OR PARACHUTAL STALL	15
13.8.1	Signs of parachutal stall	15
13.8.2	Exit from parachutal stall	15
13.9	SPIRAL DIVES	16
13.10	STRONG TURBULENCE	16
13.11	STEERING NOT FUNCTIONING	16
14	LANDING	17
14.1	TREE LANDING	17
14.2	WATER LANDING	17
14.3	LANDING IN TURBULENCE	17
15	PACKING	17
16	MAINTENANCE & CLEANING	18
17	STORAGE	18
18	DAMAGE	18
19	GENERAL ADVICE	18
20	SALSA EXTRASMALL SKETCHES AND CERTIFICATION	19
20.1	SKETCHES	19
21	SALSA SMALL SKETCHES AND CERTIFICATION	20

שגיאה! הסימנייה אינה מוגדרת.



21.1	SKETCHES	שגיאה! הסימנייה אינה מוגדרת.
21.2	CERTIFICATION	שגיאה! הסימנייה אינה מוגדרת.
22	SALSA MEDIUM SKETCHES AND CERTIFICATION	21
22.1	SKETCHES	שגיאה! הסימנייה אינה מוגדרת.
23	SALSA LARGE SKETCHES AND CERTIFICATION	23
23.1	SKETCHES	שגיאה! הסימנייה אינה מוגדרת.



**!!! WARNING**

This is not a training manual. It is extremely dangerous to yourself and others to attempt to fly this or any paraglide without first completing a flying course given by a qualified instructor.

Apco Aviation's gliders are carefully manufactured and inspected by the factory. Please use the glider only as described in this manual. Do not make any changes to the glider. AS WITH ANY SPORT - WITHOUT TAKING THE APPROPRIATE PRECAUTIONS, PARAGLIDING CAN BE DANGEROUS.





## GLIDER TECHNICAL DATA

Size	X-Small	Small	Medium	Large
Cells	$(32 \times 3) + (2 \times 2) + 4$	$(33 \times 3) + (2 \times 2) + 4$	$(35 \times 3) + (2 \times 2) + 4$	$(37 \times 3) + (2 \times 2) + 4$
Area m <sup>2</sup>	25.7	26.7	28.6	30.5
Area (projected) m <sup>2</sup>	23.1	24.1	25.4	27.1
Span (incl. Stabiliser) m	11.65	11.98	12.65	13.32
Span (projected) m	9.8	10	10.5	11.0
Aspect Ratio	5.3	5.4	5.6	5.8
Aspect Ratio (projected)	4.2	4.2	4.4	4.5
Pilot Weight, Kg (all up)	60-75	70 - 90	80 - 105	100-130
Weight of Canopy Kg	6.4	6.7	7.0	7.3
Root Cord m	2.9	2.9	2.9	2.9
Tip Cord m	0.23	0.23	0.23	0.23
Length of Lines on B m	7.19	7.19	7.59	7.61
Total length of line used m	387	388	406	430

### LINES

	Material	Diameter	Strength
Top	Dyneema	0.8mm	90kg
Mid&st	Super Aramid	1.2mm	110kg
Bottom A3;A5;B3;B5	Super Aramid	1.8mm	220kg
Bottom A1;B1;C1,3,5	Super Aramid	1.9mm	320kg
Brake Cascades	Dyneema	1.1mm	95kg
Steering Line	Polyester	2.0mm	85kg

### FABRIC

Sail Cloth	46gr/m <sup>2</sup> "Zero Porosity" Ripstop Nylon
Warranty	3 Years / 250 hours

## GLIDER PERFORMANCE DATA

V-min.	21 km/h
V-trim	35 km/h
V-max.	48 km/h
Min Sink ( at optimum wing loading)	1.0m/s

## GLIDER CERTIFICATION DATA

SALSA EXTRA-SMALL	AFNOR Standard Class
SALSA SMALL	AFNOR Standard Class / DHV 1-2 trim & accel
SALSA MEDIUM	AFNOR Standard Class / DHV 1-2 trim & accel
SALSA LARGE	AFNOR Standard Class





## **1 DISCLAIMER OF LIABILITY**

Taking into consideration the inherent risk in paragliding, it must be expressly understood that the manufacturer and seller do not assume any responsibility for accidents, losses and direct or indirect damage following the use or misuse of this product.

APCO Aviation Ltd. is engaged in the manufacture and sale of hang gliding, paragliding, motorized Para/hang gliding and emergency parachute equipment.

This equipment should be used under proper conditions and after proper instruction from a qualified instructor. APCO Aviation Ltd. has no control over the use of this equipment and a person using this equipment assumes all risks of damage or injury.

APCO Aviation Ltd. disclaims any liability or responsibility for injuries or damages resulting from the use of this equipment.

The glider is designed to perform in the frame of the required class as certified.

## **2 CONSTRUCTION**

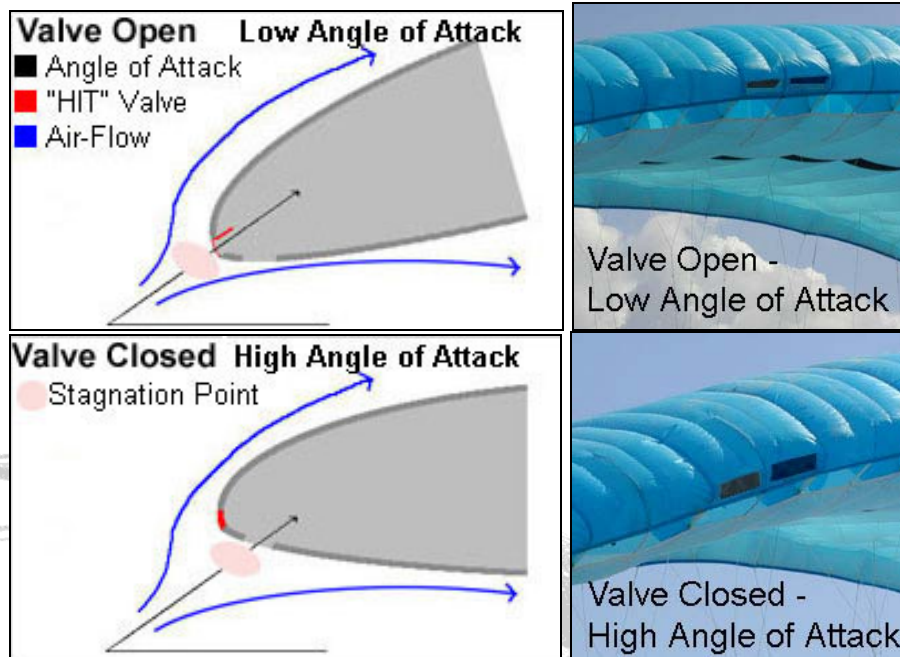
The glider is constructed with a top and bottom surface, connected by ribs. One top and bottom panel, together with the connecting ribs is called a cell. Each cell has an opening on the front lower part. The cells fill with air forcing the panels to take the shape dictated by the airfoil (rib) section. On either side the wing ends in a stabilizer or wing tip, which provides straight-line (Yaw) stability and produces some outward force to keep the span-wise tension. The front part of the ribs is made from Trilam to keep the leading edge shaped at high speeds and in turbulent air. It also improves the launch characteristics of the glider. The line hook-up points are made of Dyneema or Nylon tape.

## **3 MATERIALS**

The glider is made from tear resistant Ripstop Nylon cloth, which is P.U. coated to zero porosity and then siliconized to give the fabric high resistance to the elements. Different cloth is used for the top, bottom and ribs due to their different functions. The lines are made of superaramid covered with a polyester sheath for protection against UV, wear and abrasion. The bottom section of the brake lines is made of polyester because of its better mechanical properties. The karabiners that attach the lines to the risers are made of stainless steel.



## 4 HIT VALVES (High speed In-Take)



The Salsa is equipped with an Active HIT Valve system (patent pending) to improve the overall performance and safety of the wing especially during accelerated flight.

The valve system allows maximum inflow of air when the glider is rotated to a lower angle of attack while accelerated. HIT valves open and close in flight to increase the internal pressure of the glider.

For the valves to work properly it is important to keep them wrinkle free especially in sub zero temperatures. Make sure the valves are lying flat and are in the closed position when you fold the glider. Before the launch the pilot should check all the valves and ensure that they are flat and closing the entire area of the mesh covered opening. Creased and crumpled valves will not adversely affect the safety of the wing.

## 5 Bat holes (Velcro closure on trailing edge tip)

In order to empty sand and small stones from the glider simply shake the sand or small stones into the wing tip and open the **Bat holes (Velcro closure on trailing edge tip)** to empty. Do not forget to close the **Bat holes** afterwards.







## 6 TRIMMING

All Apco gliders are trimmed for optimum performance combined with unsurpassed safety. It is very important not to re-trim or tamper with any of the lines or risers as this may alter the performance and safety. Trimming of the brake line should be done in accordance with this manual and carefully checked before flying.

## 7 HARNESS

All of Apco's gliders are developed with the use of ABS (Automatic Bracing System) type harnesses without cross bracing. We recommend the use of an ABS harness with all our gliders. All certified harnesses can be used with our gliders. For best safety and performance we recommend an Apco harness equipped with a Mayday emergency parachute.

### **CAUTION:**

**WE STRICLY RECOMEND NOT TO USE CROSS BRACING STRAPS.**

DUE TO APCO GLIDERS ARE DEVELOPED AND TESTED WITHOUT THE USE OF CROSS BRACING. USING AN ABS HARNESS WITH CHEST STRAP SET AT THE SPECIFIED WIDTH (CHECK THE CERTIFICATE STICKER ON YOUR GLIDER) WILL RESULT IN THE HIGHEST PASSIVE SAFETY ON YOUR GLIDER.

## 8 SPEED SYSTEM

### **8.1 ASSEMBLY & ADJUSTMENT**

Apco gliders are supplied with a speed system as illustrated in option II. The pilot can change the speed system to the traditional "Apco" speed system to use the full accelerator range depending on the pulley arrangement on the harness being used.



## 8.2 OPTION 1

First attach the harness to the glider. Remove the Chain Link from the end of the accelerator line attached to the speed bar, then thread it through the elasticized ring on the harness, then through harness pulley and then re-attach it to the Chain link with a larks-head knot. Hook the Chain link onto the Chain Link on the riser of the corresponding side. Sit in the harness and have someone hold the riser up in a flying position for you. Adjust the speed bar line by pulling the end through the speed bar tube and moving the knot. The Bar should be about 10 cm (or closer if you have a second step) away from the front of the harness seat. This allows you to easily reach the bar with your foot, and will allow you to use the full range of the speed bar if you extend your legs fully. Do not adjust the speed system too short, as this will cause it to be activated permanently while flying, and could be dangerous. It is possible to fit a second step to the system, if one has trouble using the full range of the system (supplied separately).

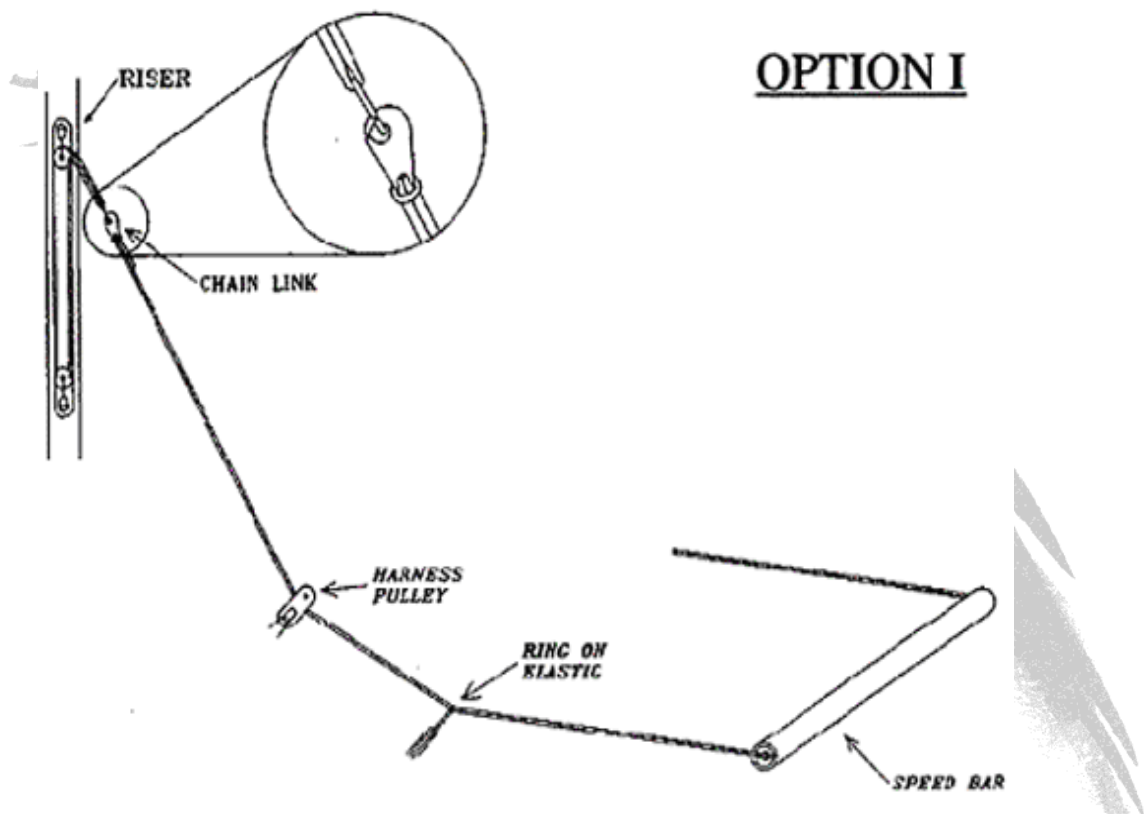


Figure 8-1

## 8.3 OPTION 2

First attach the harness to the glider, then thread the accelerator line from the top pulley on the riser, through the pulleys (and the elasticized ring if present) on your harness and then attach it to the supplied speed bar. To adjust the length and activation point of the speed system, sit in the harness and ask someone to hold the riser up in a flying position. By pulling out the end of the line protruding above the upper pulley on the riser and by moving the knot you can adjust the speed system. The Bar should be about 10 cm ( or







closer if you have a second step) away from the front of the harness seat. This allows you to use the full range of the speed bar if you extend your legs fully. Do not adjust the speed system too short as this will cause the speed system to be activated permanently while flying and could be dangerous. It is possible to fit a second step to the system if the pilot has trouble using the full range of the speed system (second step is supplied separately).

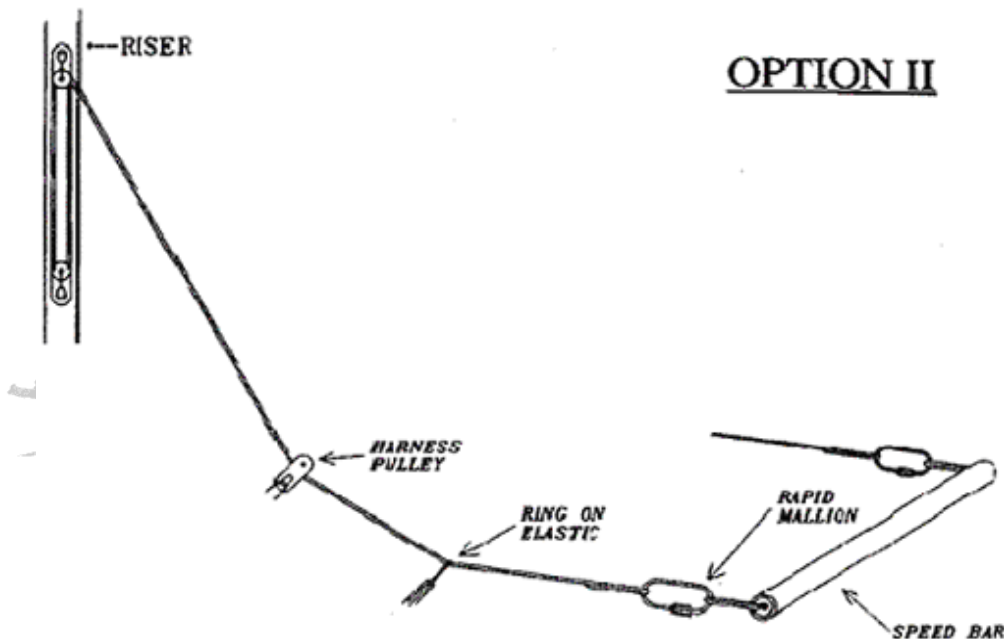


Figure 8-2

**WARNING:**

The use of the speed system in turbulent conditions or close to the ground is dangerous. While flying with the accelerator, the glider has a reduced angle of attack and is therefore more susceptible to turbulence and may collapse or partially deflate. Gliders react faster when accelerated and may turn more. The accelerator should immediately be released in this case.

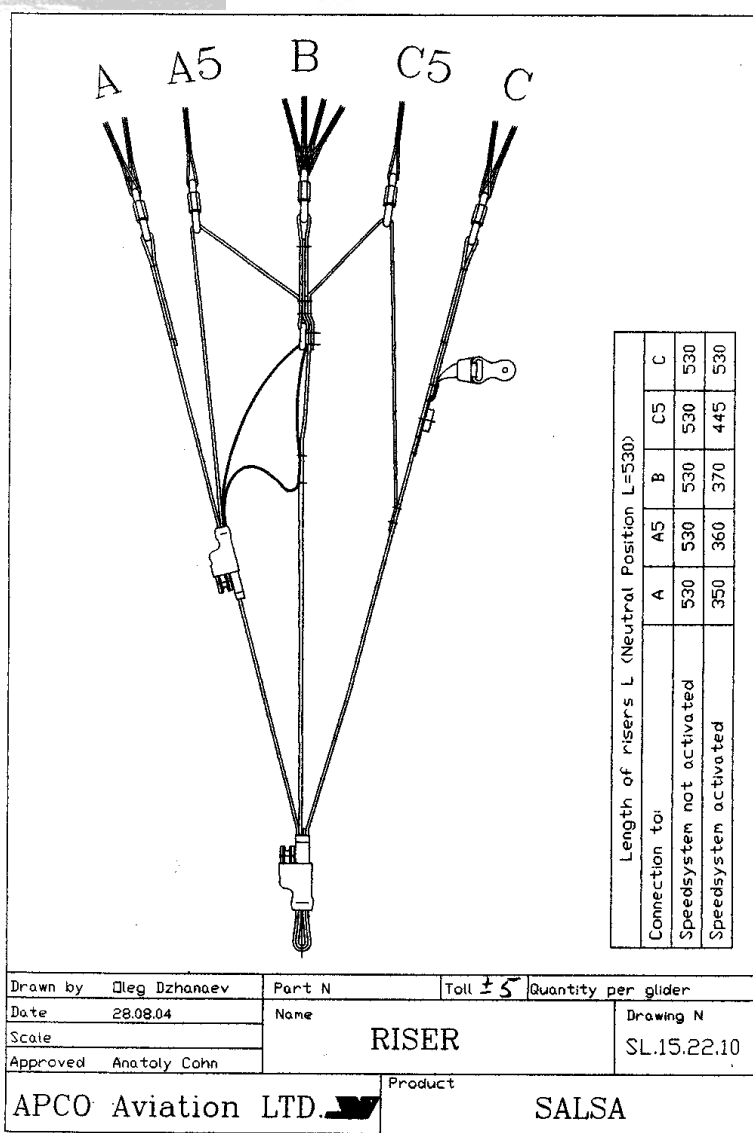
## 9 EMERGENCY PARACHUTE ATTACHMENT

It is recommended to use a certified rescue parachute when flying. Attaching the rescue parachute should be done in accordance with the recommendation of the harness and reserve parachute manufacturer.

## 10 RISERS

The Salsa is supplied with a split A riser. The 1st A-riser attaches to the central two A lines (A1 & A3). The second A-riser is attached to the outermost A line (A5). This is to facilitate Big ears or Tip tucks. At no time should the pilot change the risers or use risers not intended for this specific glider as this will affect the performance and safety of the glider.





## 11 INSPECTION

### 11.1 GENERAL

Pilots, please insure that your glider has been test flown and checked by your dealer before taking it into your possession.

### 11.2 BRAKE SETTING

Before the first flight the pilot/dealer has to take his/her glider and inflate it to check brake length and if needed shorten or lengthen the brake setting to his or her preference. It is important that the brakes are not set too short. If the glider is above your head the brakes should not be pulling the trailing edge down as that means that the brakes are too short. A good setting is to have about 10 cm of slack in the brake from the brake guide on the riser to the activation point of the brakes. (See Diagram below)

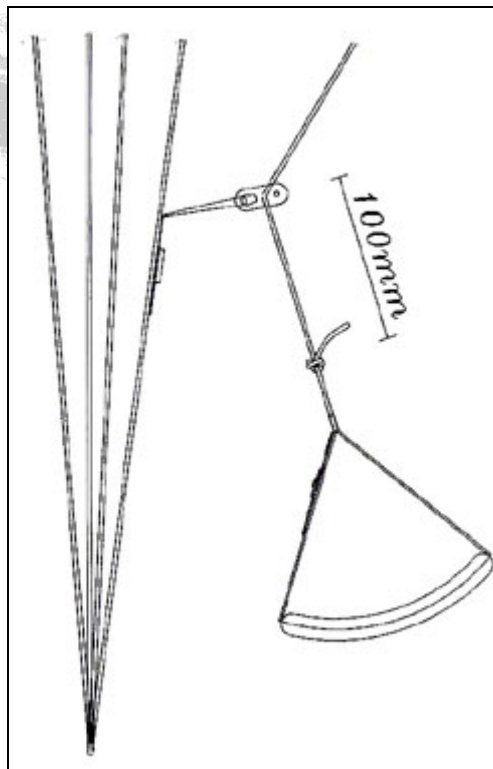


Figure 11-1 Brake Line Adjustment

### 11.3 FIRST CHECK AND PREFLIGHT INSPECTION

With every new glider, the following points should be checked:

- Connection points between the glider and the harness.
- Check that there are no lines twisted, tangled or knotted.
- Check that the risers and speed-system are hooked up to the harness correctly.

### 11.4 REGULAR INSPECTION CHECKS

- Damage to lines, webbing and thread on the stitching of the harness and risers.
- That the stainless steel connection links on the risers are not damaged and are fully closed.
- The pulleys of the speed system are free to move and the lines are not twisted.





- The condition of the brake lines, stainless steel ring and the security of the knot attaching the brake handle to the brake line.
- The sewing, condition of the lines and connection of the lines.
- Damage to hook up points on the glider.
- Internal damage to the ribs and diagonal ribs.
- Damage to the top and bottom panels and seams between panels.

## 11.5 LINE MAINTENANCE

Three groups of suspension lines and one brake line are attached to each riser. The three groups are called A, B, C and brake lines. The stabilizer lines are connected along with the B-lines. Superaramid lines are known to be sensitive to the influence of the elements. They must be carefully inspected periodically. In his/her own interest, the pilot must observe the following points to ensure maximum performance and safety from the glider.

- Avoid sharp bending and squeezing of lines.
- Take care that people do not step on the lines.
- Do not pull on the lines if they are caught on rocks or vegetation.
- Avoid getting the lines wet. If they do get wet, dry them as soon as possible at room temperature and never store them wet.

IT IS **STRICLY RECOMEND** TO CHANGE THE BOTTOM LINES ON EVERY PARAGLIDER ONCE A YEAR OR EVERY 100 HOURS, WHICH EVER COMES FIRST. THE REST OF THE LINES MUST BE CHECKED YEARLY AND REPLACED IF NECESSARY.

NEVER REPLACE THE LINES WITH DIFFERENT DIAMETER OR TYPE OF LINES AS ALL GLIDERS WERE LOAD TESTED FOR SAFETY IN THEIR ORIGINAL CONFIGURATION. CHANGING LINE DIAMETER/STRENGTHS CAN HAVE FATAL CONSEQUENCES.

Every six months one lower A, B and C line must be tested for minimum 50 % of the rated strength. If the line fails under the load test or does not return to its specified length all the corresponding lines must be replaced.

Professional use of gliders: Towing, tandem, schooling and competition flying requires more frequent line inspection and replacement of A-, B- C- and brake lines.

## 12 TAKE OFF

As this is not a training manual we will not try to teach you launching techniques. We will only briefly go through the different launch techniques to help you get the most out of your glider.

### 12.1 LAYOUT

Pre-flight check should be done before every flight.

Spread the glider on the ground. Spread the lines, dividing them into eight groups A, B, C and brake lines left and right. Make sure the lines are free and not twisted or knotted. Make sure all the lines are on top of the glider and that there are none caught on vegetation or rocks under the glider. Lay out the glider in a horseshoe shape. This method insures that all the lines are equally tensioned on launch, and results in an even inflation. The Mylar rib reinforcements will keep the leading edge open for easy inflation. The most common reason for a bad launch is a bad layout!





## **12.2 ALPINE LAUNCH OR FORWARD LAUNCH**

The Salsa has very good launch behaviour in no wind conditions. For the best results we recommend the use of the following techniques: Lay out the glider and position yourself in the center of the wing with the lines almost tight. With a positive and constant force inflate the wing holding only the A-risers, and smoothly increase your running speed. The wing will quickly inflate and settle above the pilots head without the tendency to stick behind, the pilot might have to pull some brake to stop the wing from overshooting the pilot on an aggressive run. After you leave the A-risers, apply about 15% brakes and the Salsa will gently lift you off the ground.

## **12.3 STRONG WIND AND REVERSE LAUNCH**

The Salsa has a lot of lifting power and care should be taken in strong wind. It is advisable to have an assistant hold the pilot when attempting a strong wind launch. It also helps if you walk towards the canopy and leave the A-riser just before the glider gets above your head. Then pull a bit of brake to stop the wing from overshooting, but not too much as the glider might pull you off your feet too early. The assistant should let the pilot walk in under the wing on inflation rather than resist the inflation; this reduces the tendency of the glider to lift the pilot prematurely.

## **12.4 TOW OR WINCH LAUNCHING**

All APCO gliders are well suited for winching and have no bad tendencies on the winch. With towing it is important to have the wing above your head on launch and not to try and force a stalled wing into the air. This is especially important if the winch operator is using high tension on the winch. Very little brake if any need be applied on launch and during the winch. Directional changes can be made with weight shift rather than brakes. While on tow, the brake pressure will be higher and more input may be needed to make corrections than in normal flight.

For all our gliders we recommend using tow accelerating system. There are different types existing on the market. Please check with your dealer or tow operator for the recommended tow accelerator system. Use of it will eliminate any chance for accidental stalling on tow.

# **13 FLIGHT TECHNIQUES**

## **13.1 FLYING SPEED**

Indicated trim speed is dependant on the amount of brake the pilot is using, wing loading, altitude above sea level and the accuracy and make of speed probe. The speeds recorded were at optimum wing loading at sea level using a Skywatch Pro; thus there could be a slight variation in speed range numbers that a pilot records.

NOTE:

The speeds indicated in the technical data sheet are the correct speeds measured at sea level using a calibrated instrument flying at optimum wing loading. Speed readings in the flight reports could differ as this was measured during testing using various instruments and is an indication of the difference between trim, stall and top speed. The speed range will be the same but the actual numbers may differ.

- With 0% brake the Salsa will fly at 35 km/h with a sink rate of 1.1m/s.
- At 25% brake the glider will fly at 31km/h with minimum sink rate 1.0 m/s.
- The best glide angle is achieved with 0% brakes.





- With 80% brake the glider will fly at about 22km/h and will be close to the stall point 21km/h.

**CAUTION:**

APART FROM WHEN FLARING AT LANDING THERE SHOULD BE NO REASON TO FLY WITH 70% TO 100% BRAKE. THE SINK RATE OF THE GLIDER WILL BE EXCESSIVE AND THERE WILL BE A POSSIBILITY OF ENTERING A DEEPSTALL OR FULLSTALL SITUATION. THERE IS ALSO THE RISK OF GOING NEGATIVE OR ENTERING A SPIN WHEN ATTEMPTING TO TURN THE GLIDER NEAR THE STALL SPEED.

**WARNING:**

The use of the speed system in turbulent conditions or close to the ground is dangerous. While flying with the accelerator, the glider has a reduced angle of attack and is therefore more susceptible to turbulence and may collapse or partially deflate. Gliders react faster when accelerated and may turn more. The accelerator should immediately be released in this case.

### **13.2 THERMAL FLYING**

The Salsa has excellent thermaling capacity and will be a pleasure even when you are in a big gaggle or just having fun on a long XC flight. The glider has high internal pressure and needs very little pilot input even in very turbulent conditions. In light lift it is advised to make flat turns to keep the glider from banking too much and avoid increasing the sink rate. In strong lift conditions it is most effective to have small turns in the core with relatively high bank. For the best climb rate in ridge lift we recommend using about 15 to 20% brake.

### **13.3 ASYMMETRIC COLLAPSE**

If one side of the glider partially folds or collapses it is important to keep your flying direction by applying some brake on the opposite side. The wing should re-inflate on its own without any input from the pilot. To help re-inflation it is possible to pull some brake on the collapsed side and release immediately. In the event of a big deflation, i.e. 70%, it is important to give brake in the opposite direction but care must be taken not to pull too much as you could stall the flying side. The glider is very solid and has a very strong tendency to re-inflate after any collapses.

### **13.4 CRAVAT**

In case a cravat should occur from an asymmetric collapse or other manoeuvres, it is important to keep your flying direction by applying some brake on the opposite side and then it can usually be opened by pulling down on the stabilo line of the affected side while countering the turn with the opposite brake and weight shift. It also helps sometimes to pull Big Ears to release the tension on the affected lines, or a combination of the above techniques, i.e. pulling on the stabilo after pulling Big Ears.

### **13.5 FRONT STALL OR SYMMETRIC COLLAPSE**

In the event of a front stall the glider will normally re-inflate on its own immediately without any change of direction. To speed up re-inflation briefly apply 30-40% brake (to pump open the leading edge). Do not hold the brakes down permanently to avoid an unwanted stall.







### 13.6 B-STALL

The Salsa has a very clean stable B stall. To enter the B stall the pilot has to pull the first 20-cm slowly until the glider loses forward speed and starts to descend vertically. Then the pilot can pull more on the B until he/she attains a stable 7 to 9 m/s descent rate. The Glider has no tendency to front rosette or become pitch unstable. To exit the B stall the pilot releases the B slowly until the glider has regained its shape and then the **last 15 cm fast** to prevent the glider from entering deep stall. The Salsa can be controlled directionally in the B stall by pulling more on one B riser than on the other to create a turn in any direction. The B-stall is a safe controlled way of losing altitude fast without any forward speed.

### 13.7 BIG EARS

Altitude can be lost in a controlled way by collapsing both tips. To do this, take the outermost A-line (attached on its own riser) on both side and pull them down until the tips collapse. Pulling one side at a time may be more comfortable and easier, especially for smaller pilots. This should close about 30% of the wing in total. It is possible to steer with weight shift.

To increase the sink rate the pilot can push the speed system after he/she has collapsed the tips. This can give up to about 7 m/s sink-rate with about 45-km/h forward speed. To exit, release the speed system and then release the tip A-lines.

It may sometimes be necessary to apply a little brake to open the tips. If using the brakes to open the tips, it is best to open one tip at a time, this avoids reducing your air-speed.

#### CAUTION:

DO NOT ATTEMPT ANY EXTREME MANEUVRES WITH THE TIPS COLLAPSED AS THIS DOUBLES THE LOAD ON THE CENTER LINES AND ATTACHMENT POINTS AND COULD LEAD TO FAILURE.

### 13.8 DEEP STALL OR PARACHUTAL STALL

Under normal flying conditions the Salsa will have no tendency to enter deep stall. All gliders can however under certain conditions enter and stay in deep stall configuration (as a result of ageing of materials, improper maintenance or pilot induced).

#### 13.8.1 Signs of parachutal stall

- The pilot has very little or no forwards speed and no wind in his face.
- The glider will be fully open but the cells will be bulging in and not out on the bottom surface.
- The glider might have a very slow turning sensation.
- You will have an increased vertical descent.

#### 13.8.2 Exit from parachutal stall

It is important to recognize this situation. Most accidents involving parachutal stall happen because the pilot did not realize that he was in deep stall.

The best way to exit a parachutal stall is to pull all the A risers down to get the wing flying again. The pilot can pull the riser down until the wing starts to fly again. The moment the wing starts to fly the pilot should release the A riser, or the wing might suffer a frontal collapse.







Alternatively the pilot can push the speed bar to lower the angle of attack and get the wing flying again.

By pulling one or both brakes while in deep stall the pilot can accidentally enter a full stall or spin.

### **13.9 SPIRAL DIVES**

The Salsa has very good behaviour in spiral and has no tendency to stick in the spiral. By progressively applying brake on one side the glider can be put into a spiral dive. Safe high sink rates can be achieved like this. The spiral has to be exited slowly by releasing the brake over one complete turn or the glider may pitch forward and possibly suffer a collapse.

Care must be taken that the pilot has enough height to exit the spiral safely.

Sink rates in excess of 19m/s can be obtained.

#### **CAUTION:**

SOME GLIDERS CAN BE NEUTRAL IN SPIRAL AND MAY NOT EXIT WITHOUT PILOT INPUT. TO EXIT A NEUTRAL SPIRAL THE PILOT HAS TO LEAN HIS/HER WEIGHT TO THE OUTSIDE OF THE TURN OR APPLY BRAKE ON THE OUTSIDE WING. AS SOON AS THE GLIDER STARTS TO SLOW DOWN IN THE SPIRAL THE OUTSIDE BRAKE MUST BE RELEASED.

PILOTS CAN SUFFER BLACK OUTS IN SPIRALS AND THE PILOT HAS TO EXIT THE SPIRAL AS SOON AS he/she FEELS ANY ABNORMAL SYMPTOMS (Black dots in field of vision or light-headedness).

### **13.10 STRONG TURBULENCE**

NEVER FLY IN STRONG TURBULENCE!

If you unexpectedly encounter strong turbulence, fly with about 20% brake applied to increase the internal pressure and the angle of attack of the canopy and land as soon as possible. If the air is turbulent on landing approach, land with Big Ears.

Learn to fly actively and to anticipate collapses and prevent them by applying brake when needed before you have unwanted collapses.

### **13.11 STEERING NOT FUNCTIONING**

If the pilot cannot reach the brake or steering lines for any reason or if they are not functioning properly, (for example: If they break on a damaged point) he or she can control the glider by pulling down on the rear risers.

Care must be taken when steering like this, as much less input is needed to turn the wing and the response of the wing is also much slower than when using the brakes.

IF YOU PULL TOO MUCH ON ONE OR BOTH RISERS THE GLIDER WILL SPIN OR STALL.





On the landing flare the pilot should be especially careful not to stall the glider too high.

## **14 LANDING**

Before landing the pilot should determine the wind direction, usually by checking a windsock, flags, smoke or your drift over the ground while doing one or more 360o turns.

- Always land into the wind.
- At a height of about 50 meters your landing setup should begin. The most commonly used one is to head into the wind and depending on the wind strength the pilot should reach his/her landing point by making s-turns.
- At a height of about 15 meters the final part of your descent should be made at trim speed into the wind.
- At a height between half a meter and one meter you can gently flair the glider by pulling gradually down on the brakes to the stall point. When top-landing it is sometimes not necessary to flare or a much smaller flare may be required, especially in strong ridge conditions.

### **14.1 TREE LANDING**

If it is not possible to land in an open area, steer into the wind towards an unobstructed tree and do a normal landing approach as if the tree is your landing spot. Flare as for a normal landing. On impact hold your legs together and protect your face with your arms.

After any tree landing it is very important to check all the lines, line measurements, and the canopy for damage.

### **14.2 WATER LANDING**

As you approach landing, release all the buckles (and cross-bracing if present) of the harness except for one leg. Just before landing, release the remaining buckle. It is advisable to enter the water downwind. Let the canopy rotate completely forward until it hits the water with the leading edge openings; the air inside will then be trapped, forming a big air mattress and giving the pilot more time to escape. Less water will enter the canopy this way, making the recovery much easier. Get away from the glider and lines as soon as possible, to avoid entanglement. Remember that a ballast bag can be emptied and then inflated with air for a flotation aid.

The canopy should be carefully inspected after a water landing, since it is very easy to cause internal damage to the ribs if the canopy is lifted while containing water. Always lift the canopy by the trailing edge, not by the lines or top or bottom surface fabric.

### **14.3 LANDING IN TURBULENCE**

One of the safest ways to land a glider in turbulent conditions is to use Big Ears. This reduces the chances of getting a collapse while on final approach. Use weight shift to control your approach. It is possible to keep the ears in until you are ready to flare the glider. Simply release the A-risers and flare the glider, starting a little higher than usual. Practice this in normal conditions before you need it in an emergency.

## **15 PACKING**

Spread the canopy completely out on the ground. Separate the lines to the left and the right side of the glider. If the risers are removed from the harness, join the two risers





together by passing one carabineers loop through the other. This keeps them neatly together and helps to stop line tangles.

Fold the canopy alternately from the right and left sides, working towards the center, press out the air, working from the rear towards the front. Place the risers at the trailing edge of the folded canopy and use them to finally roll up the canopy.

## **16 MAINTENANCE & CLEANING**

Cleaning should be carried out with water and if necessary, gentle soap. If the glider comes in contact with salt water, clean thoroughly with fresh water. Do not use solvents of any kind, as this may remove the protective coatings and destroy the fabric.

## **17 STORAGE**

When the glider is not in use, the glider should be stored in a cool, dry place. A wet glider should first be dried (out of direct sunlight). Protect the glider against sunlight (UV radiation). When on the hill keep the glider covered or in the bag. Never store or transport the glider near paint, petrol or any other chemicals.

## **18 DAMAGE**

Using spinnaker repair tape (for non-siliconized cloth) can repair tears in the sail (up to 5cm). A professional repairer should repair greater damage.

## **19 GENERAL ADVICE**

A qualified person or agent of the company should check the glider every year. The glider is carefully manufactured and checked by the factory. Never make changes to the canopy or the lines. Changes can introduce dangerous flying characteristics and will not improve flying performance.

Do not put the glider in direct sunlight when not necessary. In order to protect the glider during transportation or waiting time we recommend one of our lightweight storage bags.

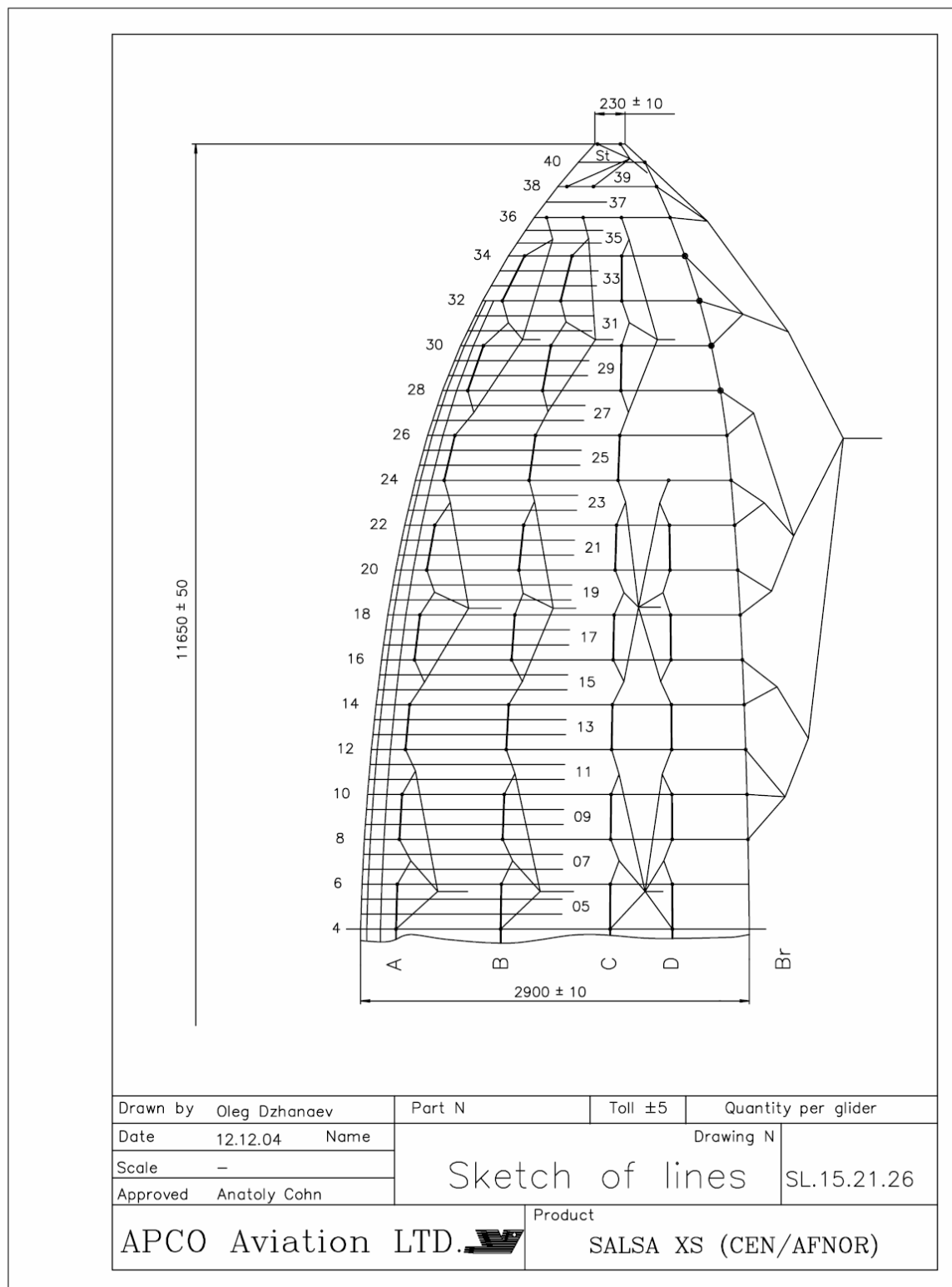
If you have any doubts about flying conditions-do not begin.

If you have any questions, please contact your dealer or us.

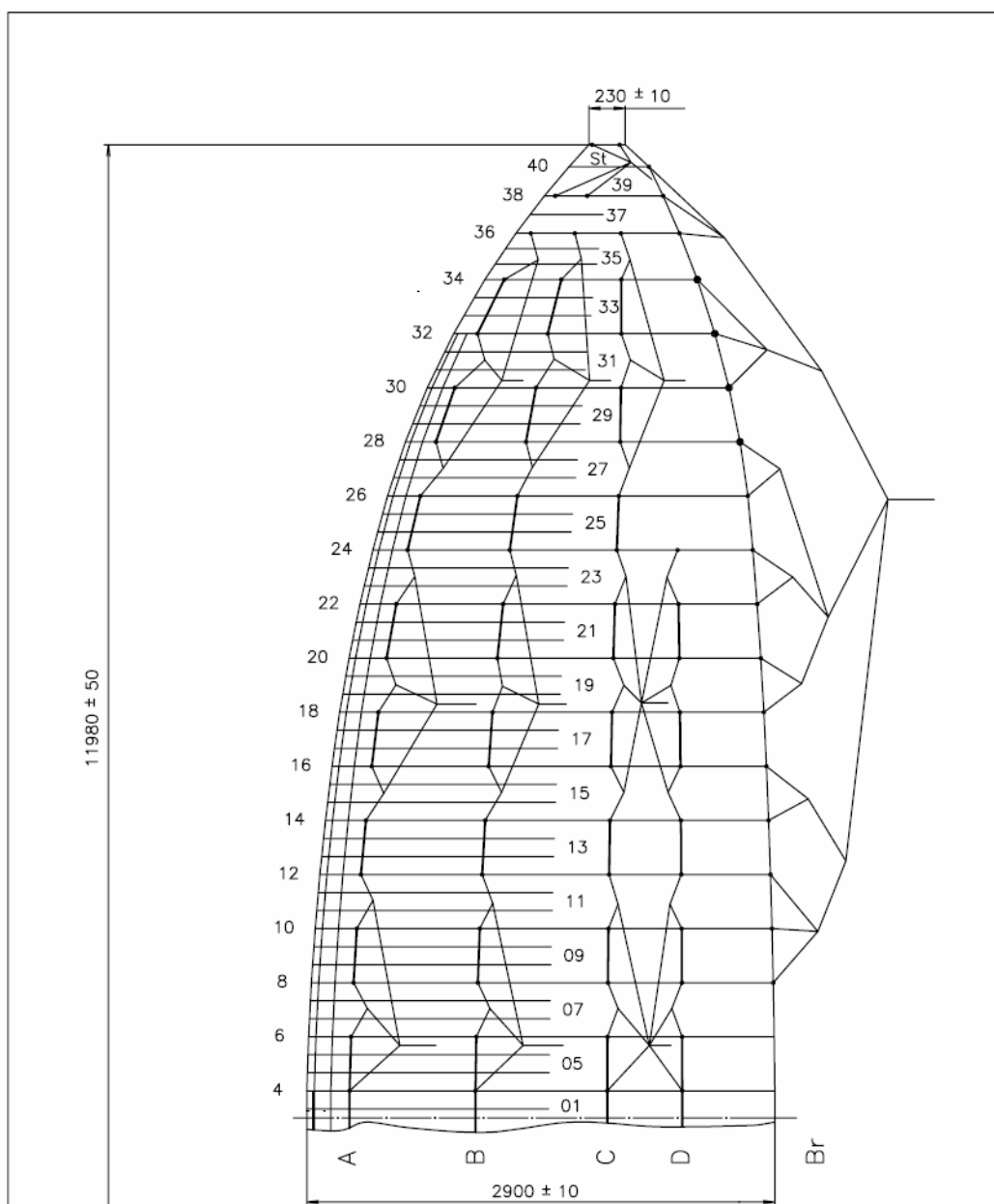
Lastly, be equipped with a certified emergency parachute and helmet on every flight.



## 20 SALSA EXTR ASMALL SKETCHES

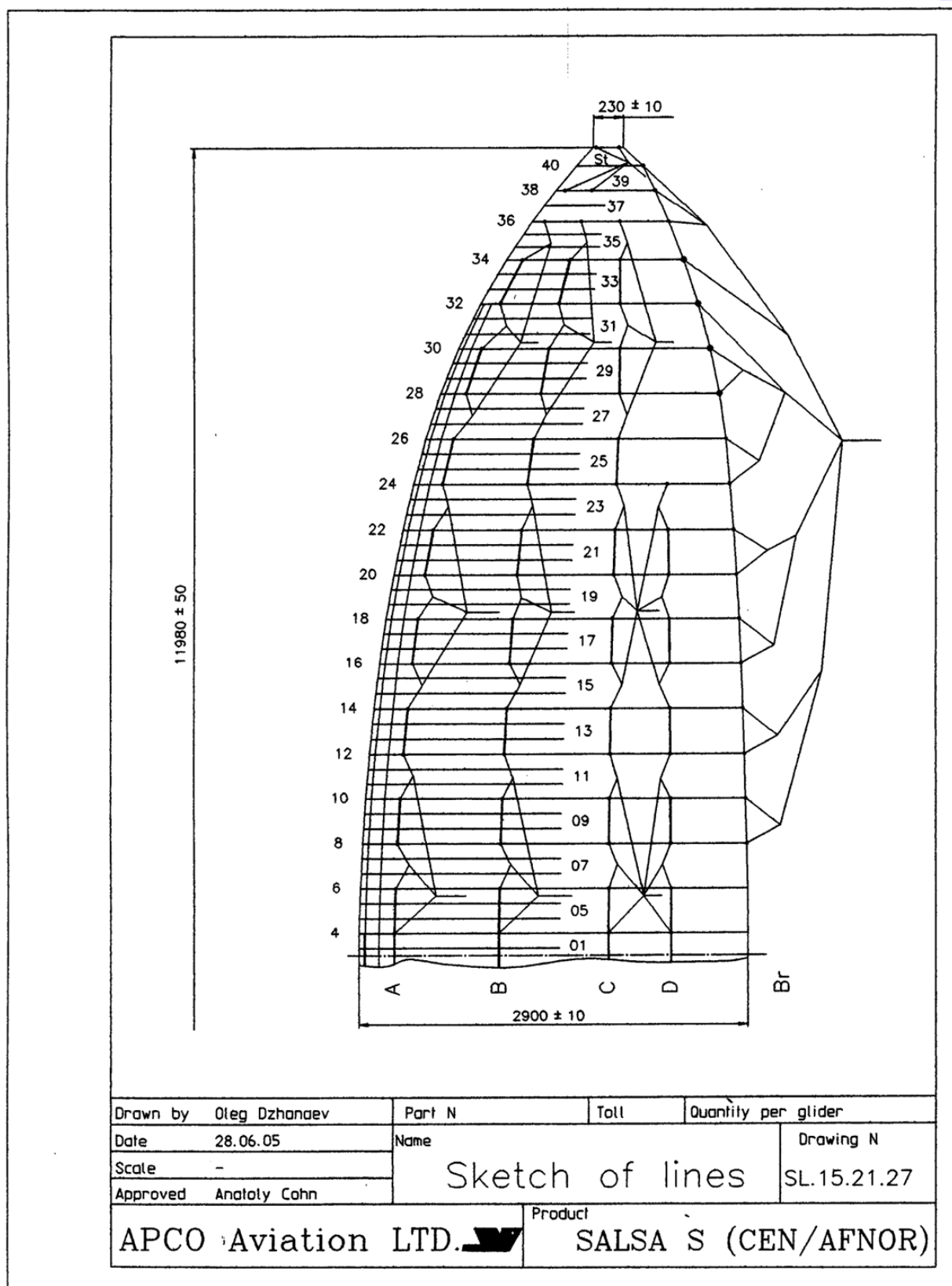


## 21 SALSA SMALL SKETCHES



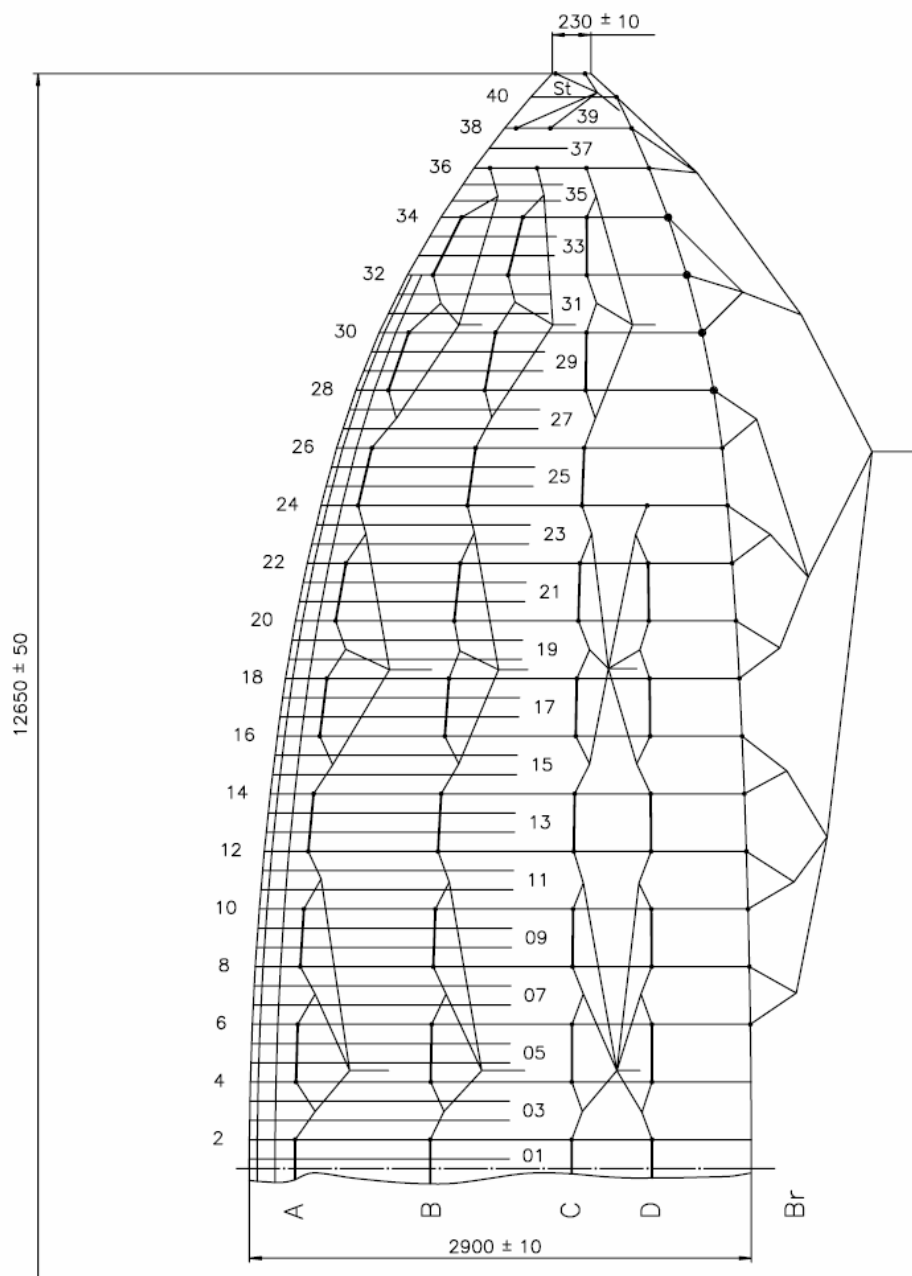
Drawn by	Oleg Dzhanayev	Part N	Toll ±5	Quantity per glider
Date	28.08.04	Name	Drawing N	
Scale	—	Sketch of lines		
Approved	Anatoly Cohn			
APCO Aviation LTD.		Product	SALSA S DHV	
			SL.15.21.27	





## 22 SALSA MEDIUM SKETCHES



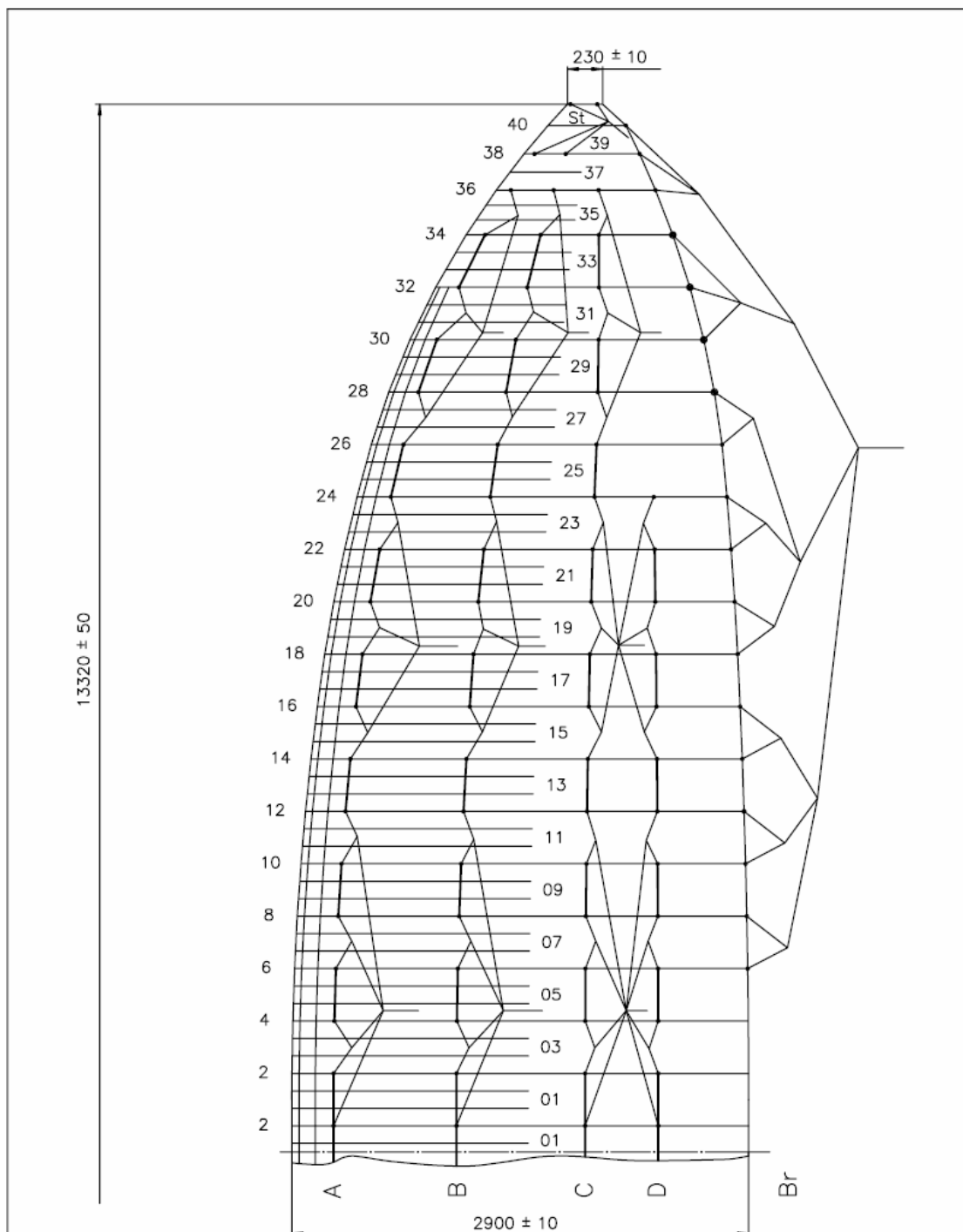


Drawn by	Oleg Dzhanoev	Part N	Toll ±5	Quantity per glider
Date	28.08.04	Name	Drawing N	
Scale	—	Sketch of lines		
Approved	Anatoly Cohn			
APCO Aviation LTD.		Product	SALSA M DHV	
			SL.15.21.29	





## 23 SALSA LARGE SKETCHES



Drawn by	Oleg Dzhanayev	Part N	Toll ±5	Quantity per glider
Date	12.12.04	Name	Drawing N	
Scale	—	Sketch of lines		
Approved	Anatoly Cohn			
APCO Aviation LTD. 			Product	SL.15.21.31
			SALSA L (CEN/AFNOR)	



## 24 SALSA EXTRA SMALL CERTIFICATION

FFVL laboratoire de tests technical testing house	Catégorie/ catégorie	STANDARD
	N° de conformité conformity number	00501178AP

testé en conformité aux normes/ tested in conformity with norms

En 926-1

EN 926-2

CONSTRUCTEUR MANUFACTURER	APCO	
MODÈLE MODEL	SALSA	X SMALL

limites de charge weight limitations		configuration du harnais lors des tests configuration of the harness during the tests	
poids total en vol mini mini total weight in flight	60kg	constructeur manufacturer	SUP AIR
poids total en vol maxi maxi total weight in flight	75kg	modèle model	PROFEEL XC
poids du modèle model weight	6kg	distance entre maillons distance between connectors	42CM
nombre d'élévateurs number of risers	5	distance maillon /assise distance connectors/ seat	42CM
débattement de l'accélérateur accelerator travel	21cm	plage de vitesse aux commandes speed range with controls	10km/h
débattement du trim trimmer's travel	néant no trim	plage de vitesse aux accessoires speed range with accessories	16km/h

périodicité de révision constructeur / inspections manufacturer's recommendations  
annuelle yearly

numéro de série serial number		date de production date of manufacturing	
----------------------------------	--	---	--

ATTENTION avant utilisation lire le manuel de vol  
WARNING before use refer to the user manual

tests de conformité réalisés par / conformity teste carried out by  
FFVL mail  
4 rue de Suisse FFVL@secretariat.ffvl.fr  
06000 Nice  
France



## 25 SALSA SMALL CERTIFICATION

**SHV  
FSVL**



Category :  
Categorie :

**STANDARD  
STANDARD**

Reference number Standards AFNOR S52-308/309  
N° de conformité aux normes AFNOR S52-308/309

Certified date :  
Date de délivrance :

**G 683/05**

**10 / 10 / 2005**

**MANUFACTURED / MARQUE : APCO AVIATION**  
**MODEL / MODÈLE : SALSA S**

### Configuration during the test / Configuration en tests

#### **Harness / Harnais**

Minimum flying weight : Poids mini total en vol :	<b>70 kg</b>
Maximum flying weight : Poids maxi total en vol :	<b>90 kg</b>
Weight of model : Poids du modèle :	<b>6.7 kg</b>
Number of risers : Nombre d'élévateurs :	<b>4</b>

Type :	<b>ABS</b>
Type :	
Manufactured : Marque :	<b>APCO AVIATION</b>
Model : Modèle :	<b>FINESSE S</b>
Seat / maillons distance: Distance maillons / assise :	<b>40 cm</b>
Chest strap adjust : Entr'axe maillons :	<b>42 cm</b>

#### **Accessories / Accessoires**

Range of speed barre : Accélérateur :	in cm	<b>20 cm</b>	Range of trimmers : Afficheurs :	in cm	<b>No / Non</b>
Breakes speed range : Plage de vitesse aux freins :	in Km/h	<b>12 km/h</b>	Range with accessories : Plage de vitesse avec accessoires :	in Km/h	<b>17 km/h</b>

**Check every** (wichever is earlier) :

**Révision tous les** (échéance du 1<sup>er</sup> critère) :

**Annual or after 100 hours flying time**  
**Annuel ou après 100 heures de vol**

Serial number N° de série:  
N° de série :

Date of manufacturing :  
Date de production :

**Warning :** before use, refer to the user manual !

**Avertissement :** avant utilisation, prendre connaissance des instructions du manuel de vol !

**Conformity tests carried out by : / Tests de conformité réalisés par :**

	<b>AIR TURQUOISE</b> for Swiss Federation of Free Flight pour la Fédération Suisse de Vol Libre Seefeldstrasse 224 CH-8008 Zürich	<b>AIR TURQUOISE:</b> Fax 00-41 (0) 21 965 65 66 Tél 00-41 (0) 79 202 52 30
		<b>SHPA / FSVL :</b> Tél 00-41 (0) 1 387 46 80 Fax 00-41 (0) 1 387 46 89



## Deutscher Hängegleiterverband e.V. im DAeC DHV/OeAeC-Technikreferat

LBA-anerkannte Prüfstelle für Hängegleiter und Gleitsegel  
Beauftragter der österreichischen Luftfahrtbehörde

### GS Testflug DHV03 Apco Salsa S

Test No	012799-GSTF03-288-Harry
Test date	10.08.2004
Type	Apco Salsa S
Test type	GS Testflug DHV03
Order	Auftrag GS Musterprüfung Apco Salsa S (Apco Aviation Ltd.)
Customer	Apco Aviation Ltd.
Test standard	Lufttüchtigkeitsforderungen für HG und GS
Expert	Buntz
Result	positive
Billing to:	100%
Technical peculiarities	

-----  
Datum / Unterschrift (Buntz)

### DHV test flight main data

Harness type	Mix
Take off weight [kg]	90
Weight limit for certification [kg]	90
Number of pilots	1
Trim speed [km/h]	35
Accelerated speed [km/h]	48
Classification	1-2

### Supplementary remarks

### PG test flight specific

Harness category	GH
Accelerator used?	Yes
Trimms	-

### DHV PG Test flight 2003 data

Take off	
Take off class.	1-2
Inflation	evenly, immediately
Rising behaviour	immediately comes over pilot





Take off speed	average
Take off handling	average
Straight flight	
Straight flight class.	1
Speed range	high
Roll damping	high
Pitch damping	average
Yaw stability	high
Turn handling	
Turn handling class.	1-2
Spin tendency	slight
Control travel	average
Agility	average
Control pressure increase	average
Control without brakes	control through rear risers possible
Symmetric stall	
Deep-stall limit	1-2
Deep-stall limit	average 60 cm - 75 cm
Full stall limit	average 65 cm - 80 cm
Full stall with full steering way	yes, soft stall
Falling back	slight
Increase in steering power	average
Front collapse	
Front collapse class.	1-2
Effort	average
Pre-acceleration	slight
Opening behaviour	spontaneous, delayed
Front collapse (accelerated)	
Front collapse accelerated class.	1-2
Effort	average
Pre-acceleration	slight
Opening behaviour	spontaneous, delayed
Asymmetric collapse	
Asymmetric collapse class.	1-2
Turn tendency	90 - 180 degrees
Change of course	90 - 180 degrees
Rate of turn	average with deceleration
Max. roll/pitch angle	less than 45 degrees
Loss of altitude	average







Stabilization	spontaneous
Opening behaviour	spontaneous, delayed
Asymmetric collapse (accelerated)	
Asymmetric collapse acc. class.	1-2
Turn tendency	90 - 180 degrees
Change of course	90 - 180 degrees
Rate of turn	average with deceleration
Max. roll/pitch angle	less than 45 degrees
Loss of altitude	average
Stabilization	spontaneous
Opening behaviour	spontaneous, delayed
Countersteering an asymmetric collapse	
Countersteering an asymmetric collapse class.	1-2
Stabilization	countersteering easy
Control travel	average
Control pressure increase	average
Turn in opposite direction	easy, no tendency to stall
Opening behaviour	spontaneous, delayed
Full stall, symm. exit	
Fullstall, symm. exit class	1-2
Behaviour	stable
Reaction	
	average shoot forward no collapse
Turn tendency	no turn
Rate of turn	
Loss of altitude	
Stabilization	
Opening behaviour	
Spin out of straight flight	
Spin out of straight flight class.	1-2
Rate of turn	average
Exit	turn continues through < 90 degrees
Reaction	average shoot forward to one side





Turn tendency	no collapse
Rate of turn	no turn
Loss of altitude	
Stabilization	
Opening behaviour	
Spin out of turn	
Spin out of turn class.	1
Reaction	slight shoot forward to one side
	no collapse
Turn tendency	no turn
Rate of turn	
Loss of altitude	
Stabilization	
Opening behaviour	
Spiral dive	
Spiral dive class.	1-2
Entry	average
Spin tendency	slight
Exit	turn continues through < 180 degrees
Sink rate after 720 °[m/s]	8
B-line stall	
B-line stall class.	1-2
Entry	easy
Exit	delayed acceleration < 4 sec
Big ears	
Big ears	1
Entry	easy
Recovery	spontaneous, quickly
Big ears accelerated	
Big ears acc. class.	1
Entry	easy
Recovery	spontaneous, quickly
Landing	
Landing class.	1-2
Point of flare	average
Landing speed	slight
Landing behaviour	average





20.08.2004 15:38:59

qi=250012

**Deutscher Hängegleiterverband e.V. im DAeC**  
**DHV/OeAeC-Technikreferat**

LBA-anerkannte Prüfstelle für Hängegleiter und Gleitsegel  
Beauftragter der österreichischen Luftfahrtbehörde

**GS Testflug DHV03 Apco Salsa S**

Test No	012839-GSTF03-295-ines
Test date	11.08.2004
Type	Apco Salsa S
Test type	GS Testflug DHV03
Order	Auftrag GS Musterprüfung Apco Salsa S (Apco Aviation Ltd.)
Customer	Apco Aviation Ltd.
Test standard	Lufttüchtigkeitsforderungen für HG und GS
Expert	Sattler
Result	positive
Billing to:	100%
Technical peculiarities	

-----  
Datum / Unterschrift (Sattler)

**DHV test flight main data**

Harness type	SUP' AIR 02
Take off weight [kg]	70
Weight limit for certification [kg]	70
Number of pilots	1
Trim speed [km/h]	33
Accelerated speed [km/h]	0
Classification	1-2
Supplementary remarks	

**PG test flight specific**

Harness category	GH
Accelerator used?	Yes
Trims	-

**DHV PG Test flight 2003 data**

Take off





Take off class.	1-2
Inflation	evenly, immediately
Rising behaviour	immediately comes over pilot
Take off speed	average
Take off handling	average
Straight flight	
Straight flight class.	1
Speed range	high
Roll damping	high
Pitch damping	high
Yaw stability	high
Turn handling	
Turn handling class.	1-2
Spin tendency	slight
Control travel	average
Agility	average
Control pressure increase	high
Control without brakes	control through rear risers possible
Symmetric stall	
Deep-stall limit	1-2
Deep-stall limit	average 60 cm - 75 cm
Full stall limit	average 65 cm - 80 cm
Full stall with full steering way	yes, soft stall
Falling back	slight
Increase in steering power	average
Front collapse	
Front collapse class.	1-2
Effort	average
Pre-acceleration	slight
Opening behaviour	spontaneous, delayed
Front collapse (accelerated)	
Front collapse accelerated class.	1-2
Effort	average
Pre-acceleration	slight
Opening behaviour	spontaneous, delayed
Asymmetric collapse	
Asymmetric collapse class.	1
Turn tendency	< 90 degrees
Change of course	90 - 180 degrees
Rate of turn	slight





Max. roll/pitch angle	less than 45 degrees
Loss of altitude	slight
Stabilization	spontaneous
Opening behaviour	spontaneous, delayed

#### Asymmetric collapse (accelerated)

Asymmetric collapse acc. class.	1-2
Turn tendency	90 - 180 degrees
Change of course	90 - 180 degrees
Rate of turn	average with deceleration

Max. roll/pitch angle	less than 45 degrees
Loss of altitude	average
Stabilization	spontaneous
Opening behaviour	spontaneous, delayed

#### Countersteering an asymmetric collapse

Countersteering an asymmetric collapse class.	1-2
Stabilization	countersteering easy
Control travel	average
Control pressure increase	high
Turn in opposite direction	easy, no tendency to stall
Opening behaviour	spontaneous, delayed

Full stall, symm. exit	
Fullstall, symm. exit class	1-2
Behaviour	stable

Reaction	average shoot forward no collapse
Turn tendency	no turn
Rate of turn	

Loss of altitude	
Stabilization	
Opening behaviour	

Spin out of straight flight	
Spin out of straight flight class.	1-2





Rate of turn	average
Exit	spontaneous
Reaction	slight shoot forward to one side no collapse
Turn tendency	no turn
Rate of turn	
Loss of altitude	
Stabilization	
Opening behaviour	
Spin out of turn	
Spin out of turn class.	1-2
Reaction	slight shoot forward to one side no collapse
Turn tendency	no turn
Rate of turn	
Loss of altitude	
Stabilization	
Opening behaviour	
Spiral dive	
Spiral dive class.	1-2
Entry	average
Spin tendency	slight
Exit	turn continues through < 180 degrees
Sink rate after 720 °[m/s]	6
B-line stall	
B-line stall class.	1-2
Entry	easy
Exit	delayed acceleration < 4 sec
Big ears	
Big ears	1
Entry	easy
Recovery	spontaneous, quickly
Big ears accelerated	
Big ears acc. class.	1
Entry	easy
Recovery	spontaneous, quickly
Landing	
Landing class.	1-2



Point of flare	average
Landing speed	slight
Landing behaviour	average

23.08.2004 06:42:25

qi=250012



## 26 SALSA MEDIUM CERTIFICATION

**SHV  
FSVL**



Category :  
Categorie :

**STANDARD  
STANDARD**

Reference number Standards AFNOR S52-308/309  
N° de conformité aux normes AFNOR S52-308/309

Certified date :  
Date de délivrance :

**G 682/05**

**07 / 01 / 2006**

**MANUFACTURED / MARQUE : APCO AVIATION**  
**MODEL / MODÈLE : SALSA M**

### Configuration during the test / Configuration en tests

#### **Harness / Harnais**

Minimum flying weight : Poids mini total en vol :	<b>80 kg</b>
Maximum flying weight : Poids maxi total en vol :	<b>105 kg</b>
Weight of model : Poids du modèle :	<b>7.0 kg</b>
Number of risers : Nombre d'élévateurs :	<b>4</b>

Type :	<b>ABS</b>
Manufactured : Marque :	<b>APCO AVIATION</b>
Model : Modèle :	<b>FINESSE L</b>
Seat / maillons distance: Distance maillons / assise :	<b>40 cm</b>
Chest strap adjust : Entr'axe maillons :	<b>44 cm</b>

#### **Accessories / Accessoires**

Range of speed barre : Accélérateur :	in cm	<b>20 cm</b>	Range of trimmers : Afficheurs :	in cm	<b>No / Non</b>
Breakes speed range : Plage de vitesse aux freins :	in Km/h	<b>12 km/h</b>	Range with accessories : Plage de vitesse avec accessoires :	in Km/h	<b>17 km/h</b>

**Check every** (wichever is earlier) :

**Révision tous les** (échéance du 1<sup>er</sup> critère) :

**Annual or after 100 hours flying time**  
**Annuel ou après 100 heures de vol**


Serial number N° de série:  
N° de série :

Date of manufacturing :  
Date de production :

**Warning :** before use, refer to the user manual !

**Avertissement :** avant utilisation, prendre connaissance des instructions du manuel de vol !

**Conformity tests carried out by : / Tests de conformité réalisés par :**

	<b>AIR TURQUOISE</b> for Swiss Federation of Free Flight pour la Fédération Suisse de Vol Libre Seefeldstrasse 224 CH-8008 Zürich	<b>AIR TURQUOISE:</b> Fax 00-41 (0) 21 965 65 66 Tél 00-41 (0) 79 202 52 30
		<b>SHPA / FSVL :</b> Tél 00-41 (0) 1 387 46 80 Fax 00-41 (0) 1 387 46 89





## Deutscher Hängegleiterverband e.V. im DAeC DHV/OeAeC-Technikreferat

LBA-anerkannte Prüfstelle für Hängegleiter und Gleitsegel  
Beauftragter der österreichischen Luftfahrtbehörde

### GS Testflug DHV03 Apco Salsa M

Prüf-Nr	012505-GSTF03-242-mike
Prüfdatum	17.06.2004
Muster	Apco Salsa M
Prüfungsart	GS Testflug DHV03
Auftrag	Auftrag GS Musterprüfung Apco Salsa M, GS Ö MAK Apco Salsa M (Apco Aviation Ltd.)
Auftraggeber	Apco Aviation Ltd.
Prüfrichtlinie	Lufttüchtigkeitsforderungen für HG und GS
Prüfer	Küng
Ergebnis	positiv
Fakturieren zu:	100%
Besonderheiten (technisch)	

-----  
Datum / Unterschrift (Küng)

### DHV Testflug Stammdaten

Gurtzeugmuster	Liga Integral
Startgewicht [kg]	105
Gewichtsgrenze für MPR[kg]	105
Anzahl Piloten	1
Trimmgeschwindigkeit [km/h]	36
Beschleunigte Geschwindigkeit [km/h]	0
Kategorie	1-2

### Ergänzungen zur Flugsicherheit

### GS-Testflug-spezifisch

Gurtzeugkategorie	GH
Beschleuniger eingesetzt?	Ja
Trimmer	-

### DHV GS-Testflug 2003 Ergebnisse

Start	
Start Kategorie	1-2
Füllverhalten	gleichmässig, sofort



Aufziehverhalten	kommt sofort über Piloten
Abhebegeschwindigkeit	durchschnittlich
Starthandling	durchschnittlich
Geradeausflug	
Geradeausflug Kategorie	1
Geschwindigkeitsfenster	hoch
Rolldämpfung	hoch
Nickdämpfung	durchschnittlich
Richtungsstabilität	hoch
Kurvenhandling	
Kurvenhandling Kategorie	1-2
Trudeltendenz	gering
Steuerweg	durchschnittlich
Wendigkeit	durchschnittlich
Steuerkraftanstieg	durchschnittlich
Steuerbarkeit o. Bremsen	steuerbar über hintere Traggurten
Beidseitiges Überziehen	
Beidseitiges Überziehen Kategorie	1-2
Sackfluggrenze	durchschnittlich 60 cm - 75 cm
Fullstallgrenze	durchschnittlich 65 cm - 80 cm
Fullstall mit vollem Bremsweg	ja, weicher Strömungsabriss
Rückwärtiges Abkippen	gering
Bremskraftanstieg	durchschnittlich
Frontales Einklappen	
Frontales Einklappen Kategorie	1-2
Kraftaufwand	durchschnittlich
Vorbeschleunigung	gering
Öffnungsverhalten	selbständig verzögert

Frontales Einklappen (beschleunigt)	
Frontales Einklappen beschleunigt Kategorie	1-2
Kraftaufwand	durchschnittlich
Vorbeschleunigung	gering
Öffnungsverhalten	selbständig verzögert

Einseitiges Einklappen	
Einseitiges Einklappen Kategorie	1-2
Wegdrehen	90 - 180 Grad
Wegdrehen insgesamt	90 - 180 Grad
Drehgeschwindigkeit	durchschnittlich mit Verlangsamung



Max. Roll- bzw. Nickwinkel	kleiner 45 Grad
Höhenverlust	durchschnittlich
Stabilisierung	selbständig
Öffnungsverhalten	selbständig verzögert

#### Einseitiges Einklappen (beschleunigt)

Einseitiges Einklappen beschleunigt	1-2
Kategorie	
Wegdrehen	90 - 180 Grad
Wegdrehen insgesamt	90 - 180 Grad
Drehgeschwindigkeit	durchschnittlich mit Verlangsamung

Max. Roll- bzw. Nickwinkel	kleiner 45 Grad
Höhenverlust	durchschnittlich
Stabilisierung	selbständig
Öffnungsverhalten	selbständig verzögert

#### Einseitiges Einklappen und Gegenst.

Einseitiges Einklappen und Gegenst. Kat.	1-2
Stabilisierung	einfaches Gegenbremsen
Steuerweg	durchschnittlich
Steuerkraftanstieg	durchschnittlich
Gegendrehen	einfach, keine Tendenz zum Strömungsabriss
Öffnungsverhalten	selbständig verzögert

#### Fullstall, symm. Ausleitung

Fullstall, symm. Ausleitung Kategorie	1-2
Verhalten	ruhig

Reaktion	durchschnittliches Vorscheissen kein Einklappen
Wegdrehen	kein Wegdrehen
Wegdrehgeschwindigkeit	

Höhenverlust
Stabilisierung
Öffnungsverhalten

#### Trudeln aus Trimmgeschw.

Trudeln aus Trimmgeschw. Kategorie	1-2
------------------------------------	-----



Drehgeschwindigkeit	durchschnittlich
Ausleitung	Nachdrehen < 90 Grad
Reaktion	durchschnittliches seitliches Vorscheissen
	kein Einklappen
Wegdrehen	kein Wegdrehen
Wegdrehgeschwindigkeit	

Höhenverlust  
Stabilisierung  
Öffnungsverhalten

Trudeln aus stat. Kurvenflug	
Trudeln aus stat. Kurvenflug	
Kategorie	1
Reaktion	geringes seitliches Vorscheissen
	kein Einklappen
Wegdrehen	kein Wegdrehen
Wegdrehgeschwindigkeit	

Höhenverlust  
Stabilisierung  
Öffnungsverhalten

Steilspirale	
Steilspirale Kategorie	1-2
Einleitung	durchschnittlich
Trudeltendenz	gering
Ausleitung	Nachdrehen < 180 Grad
Sinkgeschwindigkeit nach 720 °[m/s]	7
B-Stall	
B-Stall Kategorie	1-2
Einleitung	einfach
Ausleitung	nimmt zögernd Fahrt auf < 4 Sek
Ohren anlegen	
Ohren anlegen Kategorie	1
Einleitung	leicht
Ausleitung	selbständig schnell
Ohren anlegen, beschleunigt	
Ohren anlegen beschleunigt Kategorie	1
Einleitung	leicht
Ausleitung	selbständig schnell
Landung	





Landung Kategorie	1
Abfangzeitpunkt	durchschnittlich
Aufsetzgeschwindigkeit	gering
Landeverhalten	einfach

13.07.2004 14:08:48

qi=250012

## **Deutscher Hängegleiterverband e.V. im DAeC DHV/OeAeC-Technikreferat**

LBA-anerkannte Prüfstelle für Hängegleiter und Gleitsegel  
Beauftragter der österreichischen Luftfahrtbehörde

### **GS Testflug DHV03 Apco Salsa M**

Test No	012670-GSTF03-260-Harry
Test date	21.06.2004
Type	Apco Salsa M
Test type	GS Testflug DHV03
Order	Auftrag GS Musterprüfung Apco Salsa M, GS Ö MAK Apco Salsa M (Apco Aviation Ltd.)
Customer	Apco Aviation Ltd.
Test standard	Lufttüchtigkeitsforderungen für HG und GS
Expert	Buntz
Result	positive
Billing to:	100%
Technical peculiarities	

-----  
Datum / Unterschrift (Buntz)

### **DHV test flight main data**

Harness type	Mix
Take off weight [kg]	80
Weight limit for certification [kg]	92
Number of pilots	1
Trim speed [km/h]	35
Accelerated speed [km/h]	48
Classification	1-2
Supplementary remarks	



PG test flight specific	
Harness category	GH
Accelerator used?	Yes
Trimms	-
DHV PG Test flight 2003 data	
Take off	
Take off class.	1-2
Inflation	evenly, immediately
Rising behaviour	immediately comes over pilot
Take off speed	average
Take off handling	average
Straight flight	
Straight flight class.	1
Speed range	high
Roll damping	high
Pitch damping	average
Yaw stability	high
Turn handling	
Turn handling class.	1-2
Spin tendency	slight
Control travel	average
Agility	average
Control pressure increase	average
Control without brakes	control through rear risers possible
Symmetric stall	
Deep-stall limit	1-2
Deep-stall limit	average 60 cm - 75 cm
Full stall limit	average 65 cm - 80 cm
Full stall with full steering way	yes, soft stall
Falling back	slight
Increase in steering power	high
Front collapse	
Front collapse class.	1-2
Effort	average
Pre-acceleration	slight
Opening behaviour	spontaneous, delayed
Front collapse (accelerated)	
Front collapse accelerated class.	1-2
Effort	average
Pre-acceleration	slight
Opening behaviour	spontaneous, delayed







Asymmetric collapse	
Asymmetric collapse class.	1-2
Turn tendency	90 - 180 degrees
Change of course	90 - 180 degrees
Rate of turn	average with deceleration
Max. roll/pitch angle	less than 45 degrees
Loss of altitude	average
Stabilization	spontaneous
Opening behaviour	spontaneous, delayed

#### Asymmetric collapse (accelerated)

Asymmetric collapse acc. class.	1-2
Turn tendency	90 - 180 degrees
Change of course	90 - 180 degrees
Rate of turn	average with deceleration
Max. roll/pitch angle	less than 45 degrees
Loss of altitude	average
Stabilization	spontaneous
Opening behaviour	spontaneous, delayed

#### Countersteering an asymmetric collapse

Countersteering an asymmetric collapse class.	1-2
Stabilization	countersteering easy
Control travel	average
Control pressure increase	average
Turn in opposite direction	easy, no tendency to stall
Opening behaviour	spontaneous, delayed

#### Full stall, symm. exit

Fullstall, symm. exit class	1-2
Behaviour	stable

Reaction	average shoot forward no collapse
Turn tendency	no turn
Rate of turn	





Loss of altitude  
Stabilization  
Opening behaviour

Spin out of straight flight  
Spin out of straight flight class. 1-2  
Rate of turn average  
Exit turn continues through  $< 90$  degrees  
Reaction average shoot forward to one side  
no collapse  
Turn tendency no turn  
Rate of turn

Loss of altitude  
Stabilization  
Opening behaviour

Spin out of turn  
Spin out of turn class. 1  
Reaction slight shoot forward to one side  
no collapse  
Turn tendency no turn  
Rate of turn

Loss of altitude  
Stabilization  
Opening behaviour

Spiral dive  
Spiral dive class. 1-2  
Entry average  
Spin tendency slight  
Exit turn continues through  $< 180$  degrees  
Sink rate after 720 °[m/s] 6  
B-line stall  
B-line stall class. 1-2  
Entry easy  
Exit delayed acceleration  $< 4$  sec  
Big ears  
Big ears 1  
Entry easy  
Recovery spontaneous, quickly





Big ears accelerated	
Big ears acc. class.	1
Entry	easy
Recovery	spontaneous, quickly
Landing	
Landing class.	1-2
Point of flare	average
Landing speed	slight
Landing behaviour	average

13.07.2004 14:18:05

qi=250012



## 27 SALSA LARGE CERTIFICATION

**SHV  
FSVL**



Category :  
Categorie :

**STANDARD  
STANDARD**

Reference number Standards AFNOR S52-308/309  
N° de conformité aux normes AFNOR S52-308/309

Certified date :  
Date de délivrance :

**G 664/05**

**10 / 10 / 2005**

**MANUFACTURED / MARQUE : APCO AVIATION**  
**MODEL / MODÈLE : SALSA L**

### Configuration during the test / Configuration en tests

#### **Harness / Harnais**

Minimum flying weight : Poids mini total en vol :	<b>100 kg</b>
Maximum flying weight : Poids maxi total en vol :	<b>130 kg</b>
Weight of model : Poids du modèle :	<b>7.3 kg</b>
Number of risers : Nombre d'élévateurs :	<b>4</b>

Type :	<b>ABS</b>
Manufactured : Marque :	<b>APCO AVIATION</b>
Model : Modèle :	<b>FINESSE L</b>
Seat / maillons distance: Distance maillons / assise :	<b>40 cm</b>
Chest strap adjust : Entr'axe maillons :	<b>45 cm</b>

#### **Accessories / Accessoires**

Range of speed barre : Accélérateur :	in cm	<b>20 cm</b>	Range of trimmers : Afficheurs :	in cm	<b>No / Non</b>
Breaks speed range : Plage de vitesse aux freins :	in Km/h	<b>12 km/h</b>	Range with accessories : Plage de vitesse avec accessoires :	in Km/h	<b>17 km/h</b>

**Check every** (wichever is earlier) :

**Révision tous les** (échéance du 1<sup>er</sup> critère) :

**Annual or after 100 hours flying time**  
**Annuel ou après 100 heures de vol**

Serial number N° de série:  
N° de série :

Date of manufacturing :  
Date de production :

**Warning** : before use, refer to the user manual !

**Avertissement** : avant utilisation, prendre connaissance des instructions du manuel de vol !

Conformity tests carried out by : / Tests de conformité réalisés par :

	<b>AIR TURQUOISE</b> for Swiss Federation of Free Flight pour la Fédération Suisse de Vol Libre Seefeldstrasse 224 CH-8008 Zürich	<b>AIR TURQUOISE:</b> Fax 00-41 (0) 21 965 65 66 Tél 00-41 (0) 79 202 52 30
		<b>SHPA / FSVL :</b> Tél 00-41 (0) 1 387 46 80 Fax 00-41 (0) 1 387 46 89





APCO wishes you many hours of enjoyable flying.

Take Air!

